



# **CAMit I+gsm**

## **Camera with built in Modem**

### **User's Manual**

CAMit I+gsm Manual revision: 1.1

Date: August 22, 2003

**3JTech Co., Ltd.**  
**342 Fu-Hsing N. Rd., 2F**  
**Taipei, Taiwan**  
**Tel: +886-2-2500 6919**  
**e-mail: info@3jtech.com.tw**

## **CAMit I+gsm**

### **Revision History**

Revision	Date	Changes
1.0	May 27, 2003	First Release CAMit I+ manual / Andy Yu
1.1	August 22, 2003	Add Save image function.

### ***Congratulations***

*You just acquired a fine product from 3JTech.*

*We carefully manufactured our products for you. Each unit is assembled within our own premises with the highest standard of quality.*

*Our personnel are pleased to provide you with the best-engineered technology.*

*If, for whatever reason, you are not satisfied and the product is not up to the specifications posted, our products are fully guaranteed.*

*You are invited to visit our website, <http://www.3jtech.com.tw>, in order to get the latest news about our products as well as free version of the latest software from 3JTech Co. Ltd.*

## CAMit I+gsm

# Table of Content:

Revision History .....	2
Table of Content:.....	3
1. Product Overview: .....	5
1.1 Introduction .....	5
1.2 Features .....	6
1.3 Package Content .....	6
2. Physical Description.....	7
2.1 The Front Panel .....	7
Lens .....	7
2.2 The Back Panel .....	8
RS232 Serial Connector.....	8
Phone Line Connector.....	8
Power Supply Connector.....	8
Serial Number / Firmware version .....	8
2.3 Power Supply Adaptor .....	9
Power Point Adaptor.....	9
RJ 22 Camera Point.....	9
Trigger In / Out Connector.....	9
Trigger Out .....	9
Trigger In .....	9
Ground .....	9
3. Assembling Camera.....	10
3.1 Mounting Methods .....	10
3.2 Outdoor Housings.....	10
4. Quick Setup / Installing Your Camera Software .....	11
4.1 Installing Software .....	11
4.2 Modem.....	13
4.3 Installing Your Camera.....	13
5 Application Software provided.....	14
5.1 CAMit I+ Setup .....	15
5.1.1 Setting Parameters.....	15
5.1.2 Primary Settings .....	16
5.1.2.1 Advance Settings.....	17
5.1.2.2 Adjust Sensor .....	18
5.1.3 Security Settings.....	19
5.1.3.1 Activate Security Functions: .....	20
5.1.4 View Images .....	21

## CAMit I+gsm

5.1.5 Save and Restart the Camera .....	22
5.2 CAMit I+ Application Software .....	23
5.2.1 CAMit I plus Camera Site Menu .....	23
5.2.1.1 Phonebook List.....	24
5.2.1.2 Site Management .....	24
5.2.2 Connect to a Site .....	26
5.2.3 Browsing Camera .....	27
5.2.3.1 Browsing Window .....	27
5.2.3.2 Image Information Display.....	28
5.2.3.3 Changing Image Size .....	28
5.2.3.4 Change Screen Size.....	28
5.2.4 Remotely Setup the Camera .....	29
5.2.4.1 Primary Setup:.....	29
5.2.4.2 Security Setup .....	31
5.2.5 Recording Image .....	33
5.2.5.1 Setup Recording Directory .....	33
5.2.5.2 Recording .....	34
5.2.5.3 Call Back Recording .....	34
5.2.6 Play Recorded Images .....	34
5.2.6.1 Delete Recorded Images.....	36
5.2.6.2 Save Images into JPG files .....	36
5.2.7 Modem Configurations .....	37
5.2.8 External Routine .....	37
5.2.9 Help .....	37
6. Frequently Asked Questions: .....	38
Can I view the same site from different locations? .....	38
Can I view same site simultaneously from 2 locations?.....	38
Why won't my modem in the camera recognize the dial tone?.....	38
Why won't my external trigger input work? .....	38
What should I do if I forget my password?.....	38
7. Specifications.....	39

## **CAMit I+gsm**

# **1. Product Overview:**

## **1.1 Introduction**

CAMit I+ GSM is a color camera with a built-in modem. This camera is a complete system by itself, working as a stand-alone viewing center. Further more, with 3JTech's latest development, you will be able to connect external GSM modem and make your CAMit I+ camera a complete mobile system.

It can be connected at any regular residential telephone line, or analog PBX extension line, to transmit live images via phone line. You can also link the device with an external GSM modem, together with GSM sim cards, you have created a wireless environment for your CAMit I+. You can dial in the CAMit I+ from any remote location using a computer and a modem to monitor in real time and record images.

CAMit I+ can also be triggered by its built-in motion detection, normal close to open or other external TTL level signal devices. Upon trigger, CAMit I+ will automatically dial out and send images to a remote pre-set computer for recording.

Together with the built-in real time clock, you will be able to schedule the camera for security mode. Therefore, CAMit I+ will provide you with real 24 hour surveillance system for maximum security.

## **CAMit I+gsm**

### **1.2 Features**

- ✓ Low cost, DIY remote security camera
- ✓ External GSM modem connectable
- ✓ NO computer needed at monitored site
- ✓ Point to point, modem to modem, real time remote monitoring
- ✓ Built-In Real Time clock for scheduled security
- ✓ Sensitivity adjustable motion detection, for security purposes
- ✓ Trigger In/Out connector for connecting external sensor for monitoring and security purposes
- ✓ Up to 8 external Trigger In/Out upgradeable
- ✓ Record images onto hard drive of computer, Jpeg format available
- ✓ Password protection
- ✓ Small size and low power consumption
- ✓ Automatic/Manual gamma correction
- ✓ Non aging CMOS image capture device

### **1.3 Package Content**

- 1) 1 CAMit I+ camera
- 2) 1 CD with software (CAMit I Setup & CAMit I AP) and user's manual
- 3) 1 RJ11 telephone line cord
- 4) 1 (120 V, 60 Hz) Power adaptor with Trigger In/Out connectors
- 5) 1 DB9 (RS232) serial connector cable for setup

## CAMit I+gsm

## 2. Physical Description

The following information contains the physical description of CAMit series camera. This includes the functions and the locations of each connector and indicator. The information provides useful reference when installing the product. Please familiarize yourself with CAMit cameras.

### 2.1 The Front Panel

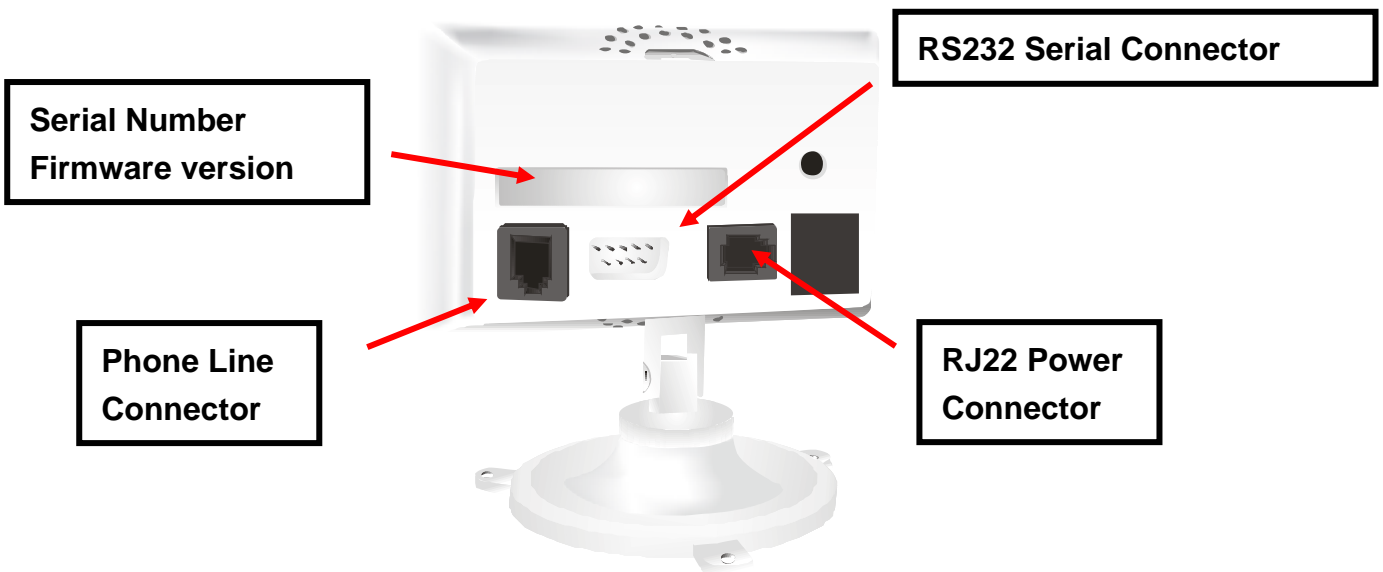


#### Lens

CAMit I box includes a standard 120° wide angle lens fix to the camera. For custom user, other types of lens are also available upon request. Please note that different price may occur with different lenses.

## CAMit I+gsm

### 2.2 The Back Panel



#### RS232 Serial Connector

This serial connector provides links between the computer and the camera via RS232. This connector is used for the computer to configure the camera. The RS232 serial connector is also used for extension of devices such as external Trigger In/Out, GSM modem etc.

#### Phone Line Connector

CAMit I+GSM is designed for connection via phone lines and modems, please plug the phone line here.

#### Power Supply Connector

CAMit adopts unique RJ22 cable for power supply. The special featured RJ22 cable includes Input / Output (I/O) function. Simply connect the Input / Output cable to desire address and no hardware jumper fixing on camera is required.

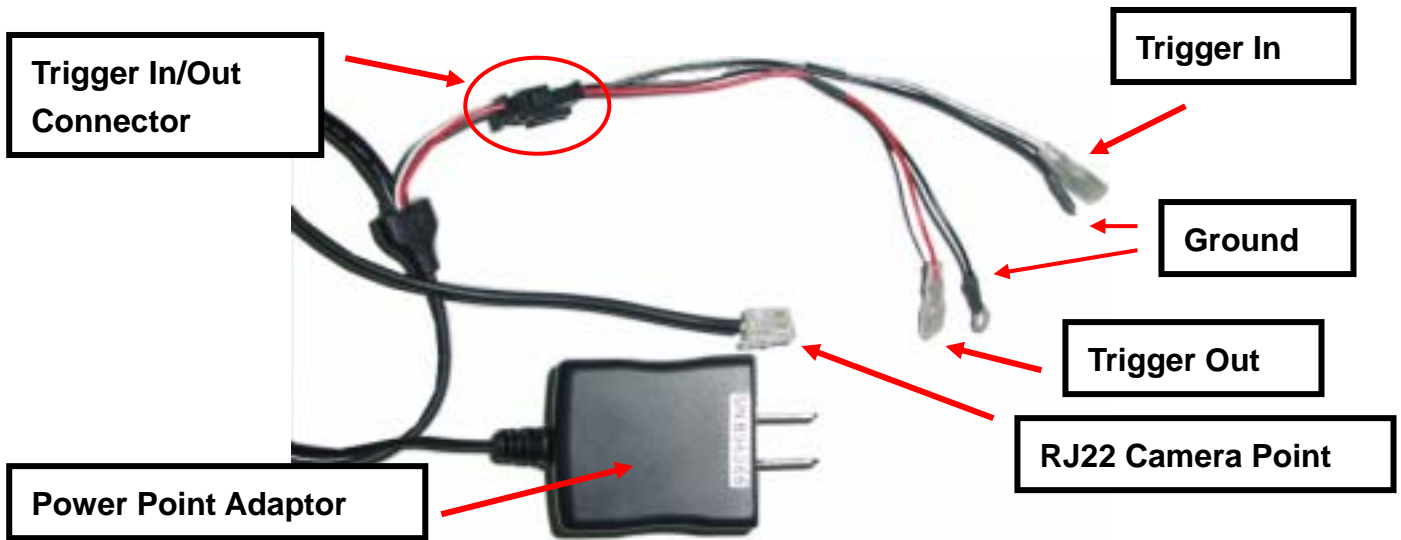
#### Serial Number / Firmware version

The label sticker includes the serial number and the Firmware version of the camera.

Note. If you have updated the camera firmware version, the firmware version information may no longer be valid.

## CAMit I+gsm

### 2.3 Power Supply Adaptor



#### Power Point Adaptor

Plug the power point to your local power point. The specifications for the power adaptor are as follows:

Input: 100 – 240Vac ~ 0.3A 50/60Hz

Output: 5.0Vdc / 2.0A

#### RJ 22 Camera Point

Plug this end to the camera's RJ22 slot.

#### Trigger In / Out Connector

The Trigger In/Out connector cable is connected to the RJ22 AC power adaptor.

#### Trigger Out

The Red cable is for Trigger Out and it needs to be connected to TTL level (0 – 5 V) external devices.

#### Trigger In

The White cable is for Trigger In and it also required to be connected to TTL level (0 – 5 V) external devices.

#### Ground

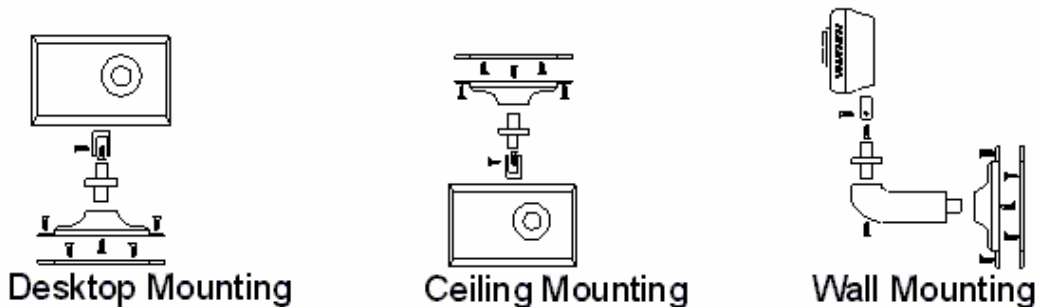
The Ground cable is the black and can be found both on *Trigger In* and *Trigger Out*.

## CAMit I+gsm

### 3. Assembling Camera

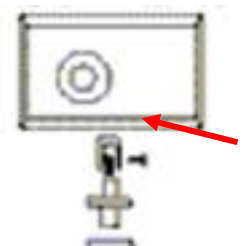
The information provided in this section will assist you in assembling and install the product correctly. It is recommended to configure the camera before positioning the camera.

#### 3.1 Mounting Methods



CAMit I+GSM come with a desktop mount upon purchase. To position the camera, fasten the camera with screws in the holes at the base of the mount. The default mount configuration is the desktop mount.

In case of ceiling mount, remove the screws attaching the mount to the camera and re-attach the mount to the spare hole on the top of the camera.



Wall mounting leg is optional accessory upon request with additional charge. Please contact your local dealer for more information.

#### 3.2 Outdoor Housings

CAMit I+GSM cameras are not designed to be outdoor camera. Due to the unexpected exterior environment, extra housing is required if you wish to install CAMit cameras outdoors.

## CAMit I+gsm

# 4. Quick Setup / Installing Your Camera Software

This section will teach you how to setup the camera step by step, including the installation of application software and using the software to configure the camera.

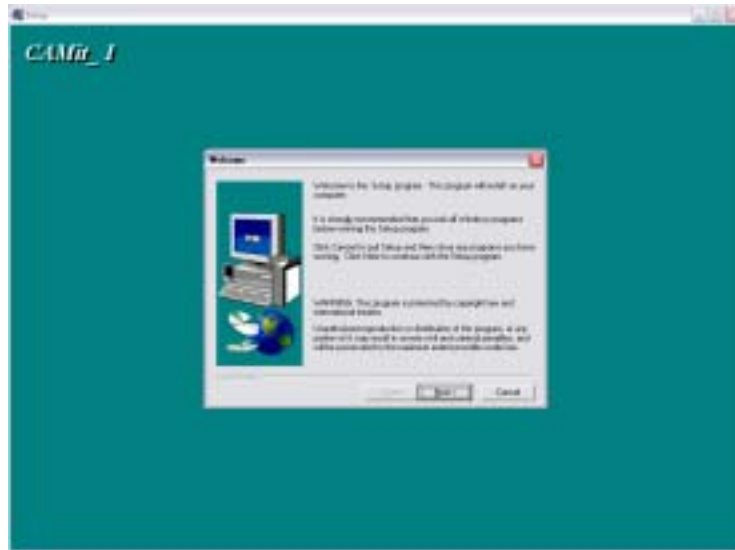
## 4.1 Installing Software

1. Place the Application CD into your CD-Rom drive.
2. When the Install window show up, select **“Setup CAMit I+ AP”** If the window does not load automatically, please go to my computers and double click on the CD-Rom drive with installation CD or run the setup.exe file under CAMit I+ directory.

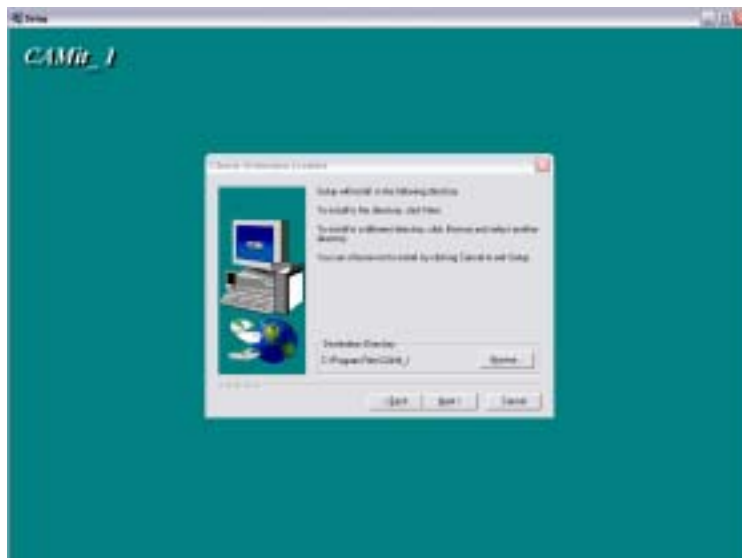


## CAMit I+gsm

3. After selecting “Install CAMit I+GSM” the Install Shield Wizard window should appear and take you through installing. Please follow the instructions and press **Next**.



4. The window will then ask you for your user information. Please enter the user information accordingly.
5. Choose Destination Location – If you wish to change the destination folder for CAMit I+GSM software, please press browse and select your desired folder else press **Next**.



6. Start Copying Files – Please click **Next** to continue or **Back** to go back to Choose Destination Location.
7. Please wait while the program is installing.
8. Click **Finish** when installation is complete.

## **CAMit I+gsm**

### **4.2 Modem**

Before proceeding with a remote CAMit I+GSM session, your PC should have a modem installed. Please, refer to your operating system to install and configure your modem.

As a reference, usual modem parameters are to be used with CAMit I+GSM. Most common ones are the following:

- 8 bits, no parity, 1 stop bit

- Hardware Flow Control, Clear to Send (CTS)

- Carrier Detect: ON

- Normal DTR Operations

- Auto Answer ON if you wish to received a call dialed by a triggered CAMit-I.

(Please refer to your modem user manual for more information on installing the modem.)

### **4.3 Installing Your Camera**

After you have set up your modem and installed the software we provided. Simply plug the phone line and the power chord to your camera at the location you wish to install. This will initiate the camera, and should be ready for you to dial in!

## **CAMit I+gsm**

# **5 Application Software provided**

Before getting started with the CAMit I+GSM, you should have already installed the software programs (CAMit I+ Setup, CAMit I+ AP and Image Player) and downloaded this user's manual from the CD provided in the package.

The CAMit I+ Setup are used to setup the parameters of the camera. It needs to be connected to the camera using a PC via a serial port. To do so, a DB9 RS232 serial cable is provided from the package.

The CAMit I+ AP is the application software to communicate with the CAMit I+GSM remotely. Please read this user's manual thoroughly to understand the functions and capabilities of the CAMit I+GSM camera.

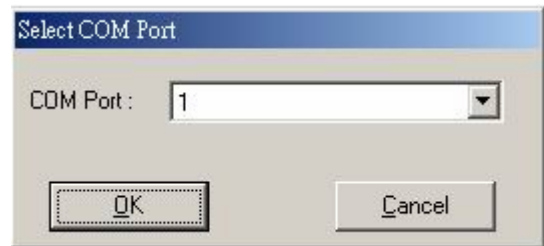
## CAMit I+gsm

### 5.1 CAMit I+ Setup

You will be able to set up your CAMit I+GSM directly off your computer. Please note that this is not necessary as you will be able to set up all the necessary functions remotely.

First, please connect your CAMit I+GSM to a PC using the DB9 (RS232) cable included. You may also download new softwares from <http://www.3jtech.com/Downloads.htm> web site.

Start the CAMit I+ Setup Application. After selecting the correct com port with valid connections between PC and CAMit I+GSM, you will be able to begin setting the parameters of CAMit I.



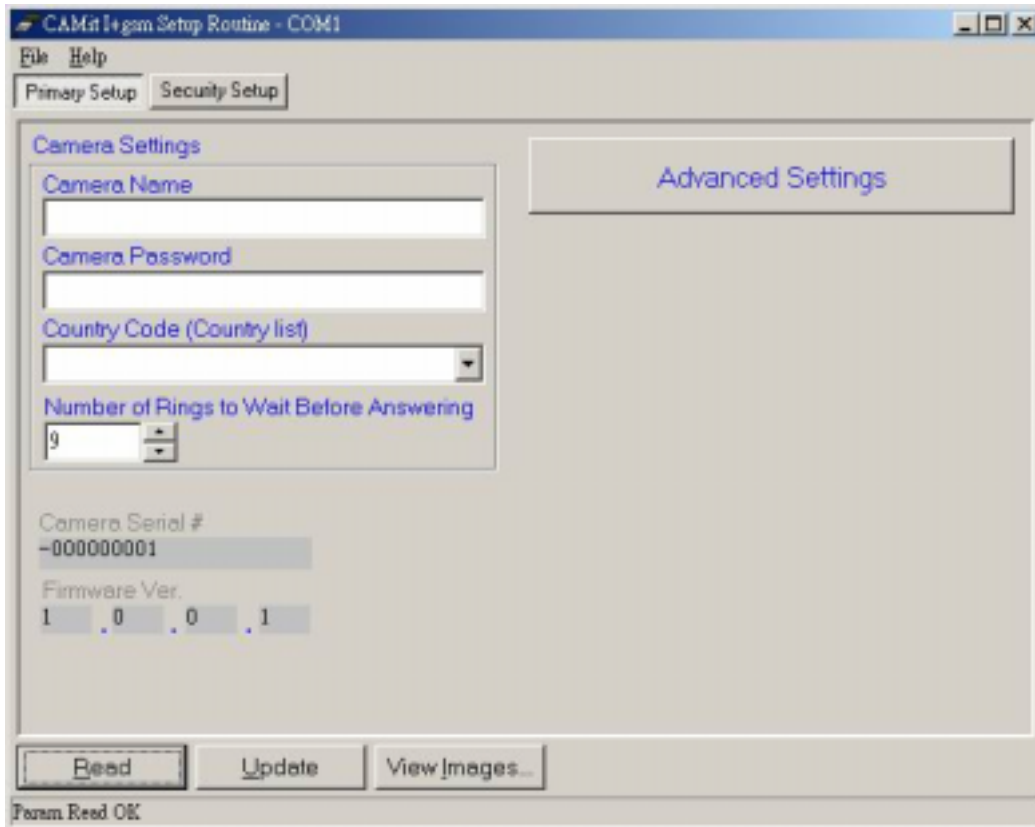
#### 5.1.1 Setting Parameters

You will be able to select 2 different sections for the setup; the **Primary Settings** and the **Security Settings**. You will be able to set up all the necessary parameters which are camera related in the **Camera Setting**. On the other hand, **Security Setting** will allow you to setup the security functions of your CAMit I+GSM camera.

## CAMit I+gsm

### 5.1.2 Primary Settings

Here are the use and the description for each parameter in Camera Settings.



#### **Camera Name:**

Here you will be able to name your Camera Site, which it will display when you establish connection with the camera. Simply enter the desire name you wish for up to 24 characters and numbers.

#### **Camera Password:**

You can set the password to your camera. It will protect others from accessing your camera. Simply enter the desire password with any combination of characters and numbers up to 24 characters.

#### **Country Code:**

The country code is the section where you will be able to select the country the camera is set. This is used because different country has slightly different dial tone. 3JTech has adjusted the camera to suit each individual environment. Simply select your country from the list.

#### **Number of ring to wait before answering:**

## CAMit I+gsm

This is where you can set your camera to pick up after certain rings. E.g. If you set it to 3, the camera will pick up the call after 3 ringing tones were detected. To set the number, please enter the number of rings at the text box below.

### Camera Serial Number:

This section will display the serial number for the camera.

### Camera Firmware Version:

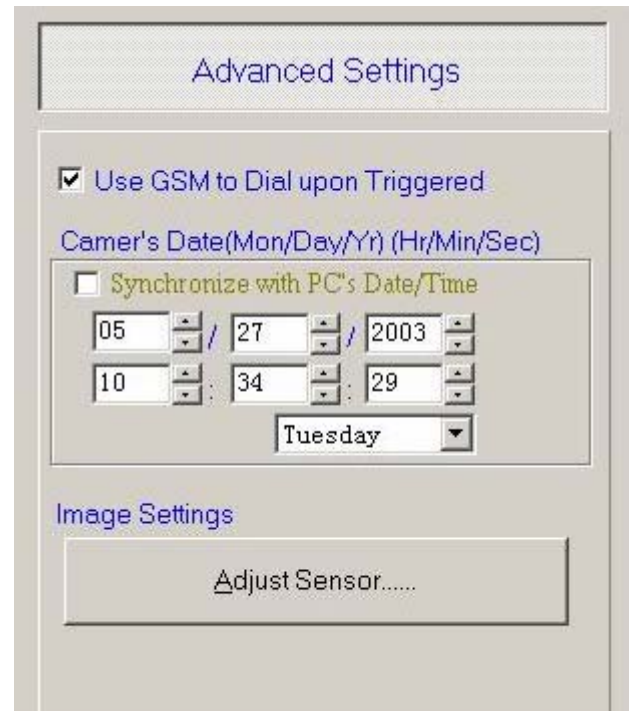
This section will display the firmware version of the camera.

#### 5.1.2.1 Advance Settings

In Advance settings, the parameters are not necessary required for the running of CAMit I+GSM. It is other optional parameters, you may set for your camera.

### Use GSM Modem:

You can choose to use an external GSM modem as the method of connection. To enable this function, please check the check box before the description.



Note. You will need to reset the camera to initiate this function. The camera will reset itself after you update the information. Please wait for at least 1 minutes before try and connect to you camera.

### Camera's Date:

This section will show you how to set up the real time clock for your camera. The clock in your camera is an individual clock, and is not related to your computer time.

#### Synchronize with PC's Date/Time:

Enable this function will allow the camera time to be synchronized with the computer. To enable it, please check the check box.

#### Camera Date (mm/dd/yyyy):

This section will allow you to set the date in the camera. Please insert the date you wish to set to the according text boxes. (Months/Date/Year and Day)

#### Camera Time (hh:mm:ss):

This section will allow you to set the time in the camera. Insert the time you wish to set

## CAMit I+gsm

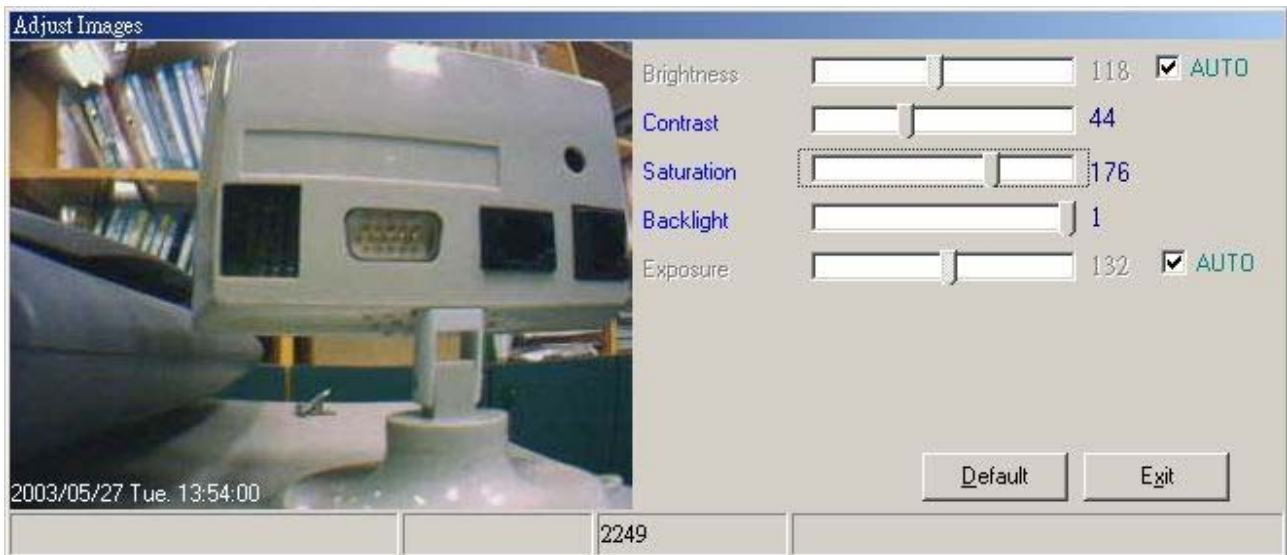
to the corresponding boxes. (Hour/Minutes/Seconds)

Note. Time synchronization will not take effect until you click on **save** button.

### 5.1.2.2 Adjust Sensor

#### Adjust Images

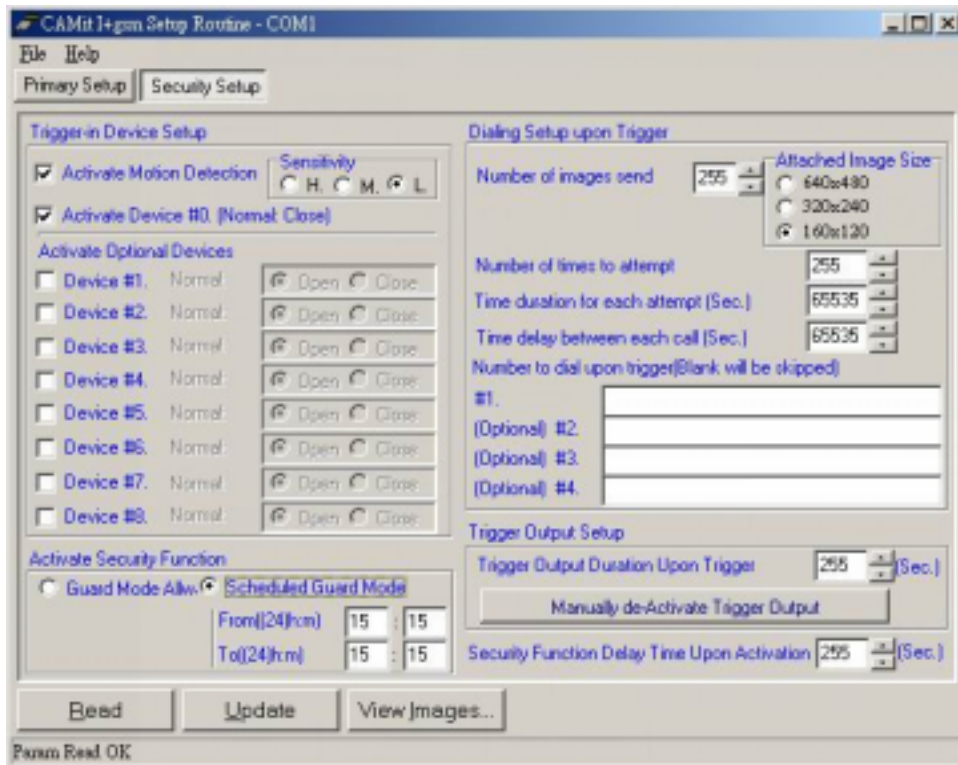
To adjust the settings of the images please click on **Configure** button. A window should load when click. You will able to adjust the different variables such as brightness, contrast, saturation, sharpness, hue, backlight and exposure of the camera by drag the scroll bar left and right. Click on Auto will allow the camera to do automatic adjustments. Click **Exit** when done.



## CAMit I+gsm

### 5.1.3 Security Settings

This section contains all the necessary parameters for you to set the security function which comes with your CAMit I+GSM cameras.



#### Enable motion detection:

This is the built-in motion detection that came along with the camera. To enable it, please check the box.

#### Sensitivity:

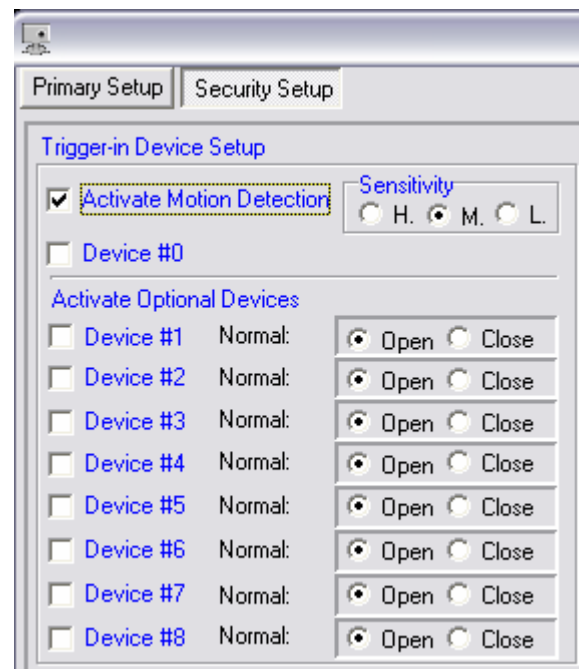
You can choose between 3 different sensitivities to suit your purpose. Please select one of the 3 options from “High”, “Mid”, and “Low.”

#### Trigger In Settings:

Here you will be able to enable the trigger in function for your camera. Please check the trigger in box you wish to enable it.

Device 1 of Trigger In is the default device that came with the camera, the wiring for it is set to be normal close. Device 2 to 9 is only available if you have installed the external trigger device with your camera.

You will be able to choose the wiring of the device, to open or close accordingly.



## CAMit I+gsm

**Note. The Following Functions will only be available when Either Motion Detection or Trigger In is enabled.**

### 5.1.3.1 Activate Security Functions:

#### Guard Mode Always:

If you chose always, the security function such as motion detection or trigger in will be on at all times.

Activate Security Function

Guard Mode Allw.  Scheduled Guard Mode

From((24)h:m) 15 : 15

To((24)h:m) 15 : 15

#### Scheduled Guard Mode:

Check this box will allow you to schedule the camera to set itself into alert mode automatically. The camera will automatically turn on its Trigger In and Motion Detection if it is set, at the corresponding time set by you.

Please insert the time accordingly to the text boxes. It operates with 24 hour time and depend on the real time clock built-in the camera. For more information regarding to setting up the real time clock please refer to the **Camera's Date** section.

#### Number of Images Send:

This will let you configure the number of pictures for the camera to send when it is triggered. Simply enter up to maximum of 20 picture you wish the camera to send when it is triggered.

Dialing Setup upon Trigger

Number of images send 255

Attached Image Size

640x480

320x240

160x120

#### Picture Sizes:

You can choose the size of the picture to be sent. There are 3 different sizes to chose from; 640x480, 320x240, 160x120. Please select one of the 3 options.

#### Call Back Parameters:

This section includes the necessary parameters for call back setup after the camera is triggered.

#### Number of Times to Attempt:

This is the number of time which the camera will try to call back to the remote

Number of times to attempt 255

Time duration for each attempt (Sec.) 65535

Time delay between each call (Sec.) 65535

Number to dial upon trigger(Blank will be skipped)

#1. \_\_\_\_\_

(Optional) #2. \_\_\_\_\_

(Optional) #3. \_\_\_\_\_

(Optional) #4. \_\_\_\_\_

## CAMit I+gsm

number when it is triggered. Please enter the number you wish in the box.

### Time Duration for each attempts (sec):

This parameter will set the duration that the camera will kept ringing until pick up. Please enter the time you desire in the according box.

### Time delay between each call (sec):

This is the time delay between each call back. Please enter the time you desire in the according box.

### Number to dial upon trigger:

CAMit I+GSM will allow you to have multiple numbers to call back. You can set up to 4 sets of number to call back. Simply insert the number you wish the camera to dial in the boxes below. The camera would only dial the boxes with numbers inserted.

Note. Please be aware of the area code for the call back number. You might have to place the area code in order for the number to be valid. Please make sure that if you're dialing off state, the area code is added.

### Manually Enable Trigger Output:

By enabling this function, you will be able to turn on the trigger out device manually. Simply check or uncheck to turn the device on and off.



### Time Output Duration Upon Trigger (sec):

This parameter is used along with the trigger in or motion detection function. It will allow you to set the time duration for the Trigger Out device to be turned on. To set this parameter, please inset the desire amount of seconds in the according text box.

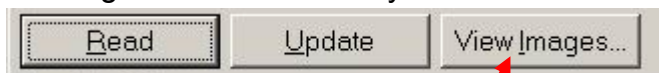
### Security Function Delay Time upon Activation:

This is the time lag which the motion detection will activate after you save and reset the camera. Please enter the time you wish to set for the time lag.



## 5.1.4 View Images

You will be able to view the images when connecting via RS232 to verify the clearness of the image. To browse the image, please click **View Images** button at the bottom of the setup window.



A new window should load upon the click of the button. To start receiving images, please

## CAMit I+gsm

click on **Start** button on right. During the viewing, you will be able to change different screen size. Please select the different image size you wish to view from the right. You can choose from 640x480, 320x240, and 160x120.



To stop receiving images, please click **Stop**. To exit, click **Exit**.

### 5.1.5 Save and Restart the Camera

When you are finished setting the camera's parameters, you **must** save the new setting to the camera, else you the new settings will not be saved. To do so, simply click the **save** button after all parameters are set.

Certain functions require you to reset the camera. To reset the camera remotely without turning off the power, simply click **Camera Reset** and chose **OK**. Wait for a few seconds, and the camera should be reset and ready to use again.

## CAMit I+gsm

### 5.2 CAMit I+ Application Software

When the CAMit I+GSM is connected to a phone line, from a remote PC, you can run the CAMit I+ AP to dial in and connect.

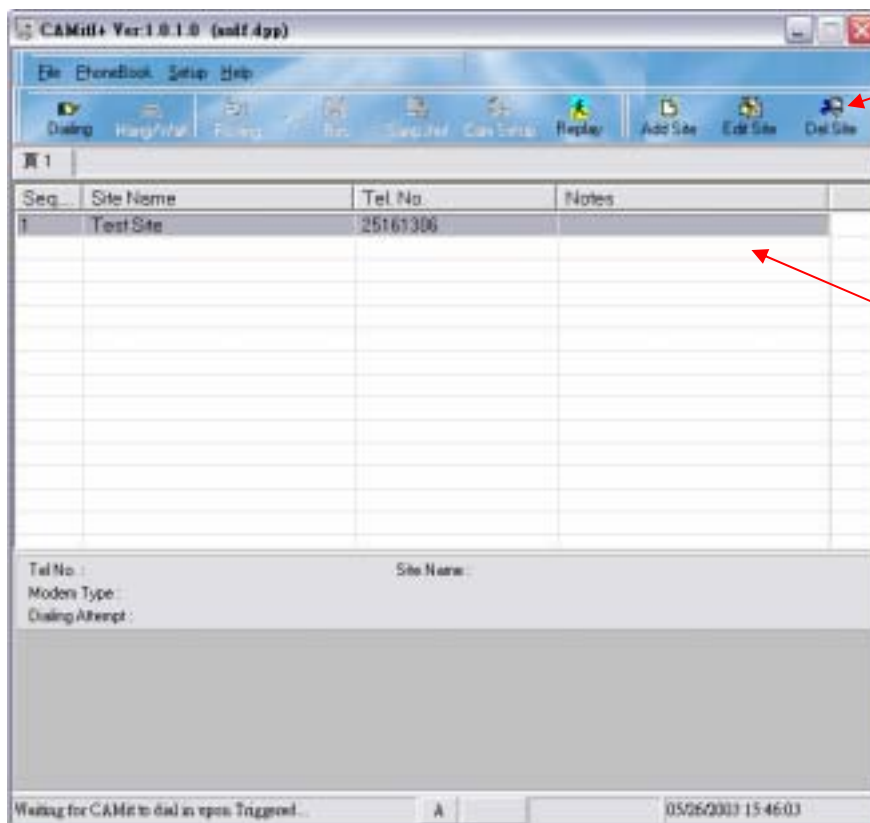
The system will demand you to select the modem. It is this modem that you will be using to dial your camera site. You **must** have a modem selected in order to dial.



#### 5.2.1 CAMit I plus Camera Site Menu

The main menu would then appear.

File Menu



Shortcuts

Phonebook List

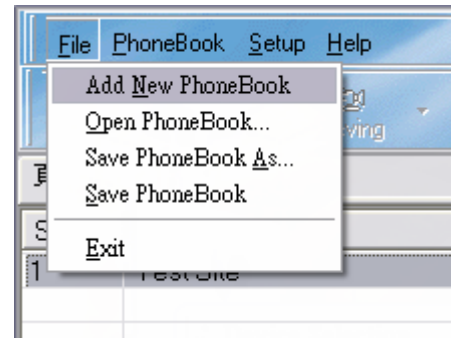
## CAMit I+gsm

### 5.2.1.1 Phonebook List

You will be able to save each the site detail to a phone book, this way you will be able to distinguish the user, or the category of the sites. Each Phonebook will have its own page and lists of sites. This way, site can be clearly distinguished.

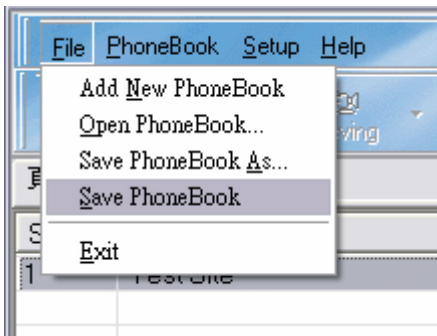
#### Create New Phonebook:

To create a new phonebook, please select from File → Add New Phonebook. The new phone book will then be created. If you have a phonebook open already, the system will ask you whether to save the old phone book first before creation of the new one.



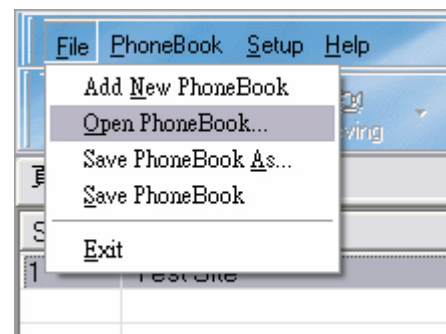
#### Save Phonebook:

You can save each of the phonebook and open them at later stage. To save the Phonebook, please select File → Save Phonebook. Please give the file a name, and save it. If you have not yet saved the phonebook, the system will ask again before you exit the program.



#### Open Phonebook:

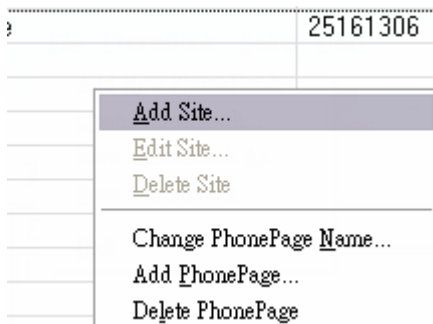
To open a pre-saved phonebook, please select File → Open Phonebook, and select the phone book you wish to open. Click OK when selected.



### 5.2.1.2 Site Management

#### Add New Camera Site:

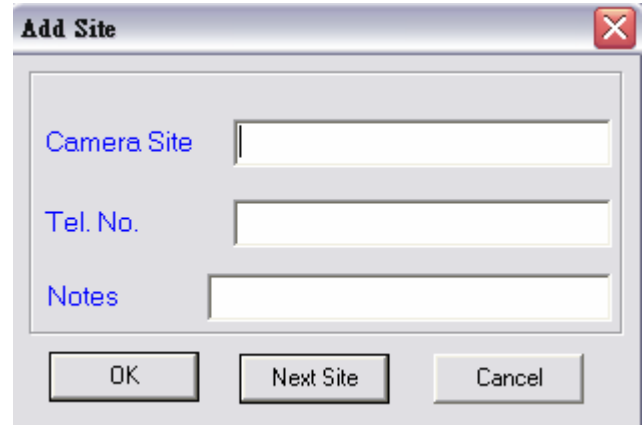
You will be able to customize your own camera sites. To add a new site to the list, please click on the **Add Site** button



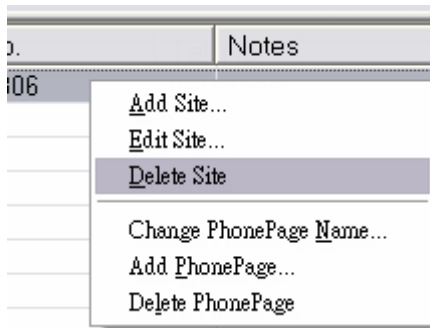
at the top of the window or you can right click on the list and select **Add**.

### CAMit I+gsm

Upon selection, a sub-menu should appear. Please enter the desired site name and the phone number accordingly. You can also add to the **Notes** section if there are special points have to be made to the camera. When you have multiple sites to add at once, you can click on **Next Site** and you will be able to proceed and continue adding sites. After everything is complete, click **OK** and the new site(s) is added to your list.



### Delete Camera Site:



To remove an unused camera site from your list, please select and highlight the camera site you wish to delete, and click the **Del Site** button or right click and select **Delete Site**. After confirmation, the camera site should be removed from the list immediately.



### Edit Camera Site:

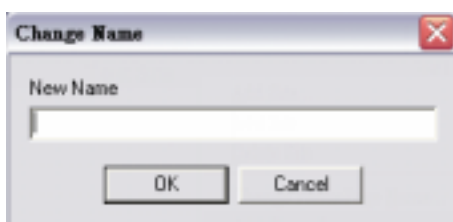
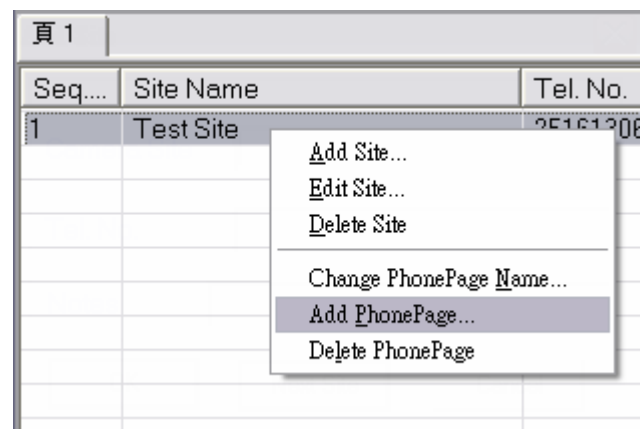
To edit the camera site on the list, first select and highlight the camera site you wish to edit and click on the **Edit Site** button or right click and choose edit.



A sub window should appear, enter the new information and click **ok** when done.

### Add New Page to Bookmark List:

You will be able to add a new page to categorize you site list. To add a new page for your bookmark, please right click the mouse and select **Add PhonePage**. The new page should be added immediately.



### Change PhonePage Name:

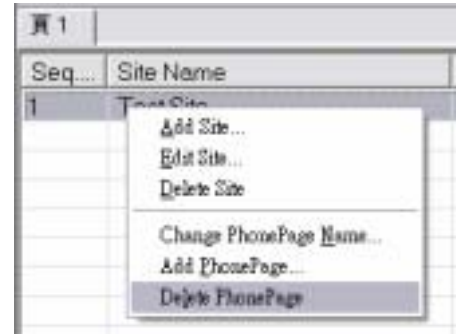
To edit the page name, first select the page you wish to edit. After you're on the page to be edited, please right click and

## CAMit I+gsm

select **Change PhonePage Name**. Please insert the new name for the page, and click OK when done.

### Delete Page:

Please select the page you wish to delete, and then select **delete page** from the right click menu. After confirmation, the page should be removed.

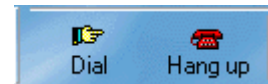


Note. All the sites on the lists will be removed, therefore it is recommended to check all the sites are no longer valid before deleting the page.

## 5.2.2 Connect to a Site

### Dial to a site:

To establish connections with the camera, select and highlight the site listed on the main menu which you wish to dial and click the **Dialing** button at the top of the window. Or you can simply double click on the site, and the program will dial for you.

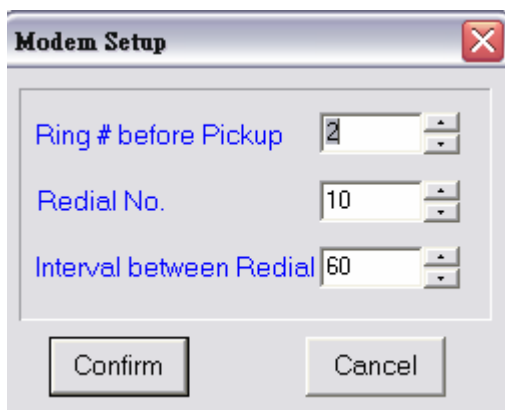
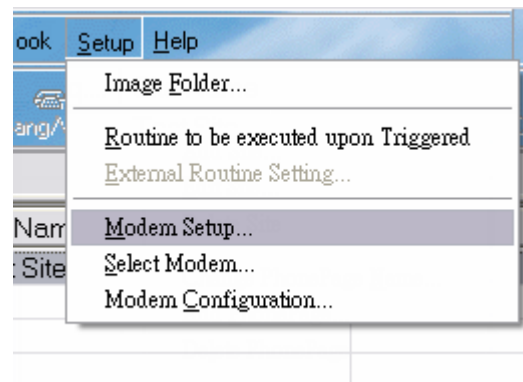


If you have set password for your camera, you will have to type in the password before the system allows you to browse the images.

To setup the dialing on your local computer, please select from File menu **Setup → Modem Setup**. You will be able to set the answering and dialing habit of your camera.

### Ring # before Pickup:

Enter a number of rings before your modem will pick the incoming calls.



### Redial No.:

This is to set the number of redial tries when you're dialing to a camera.

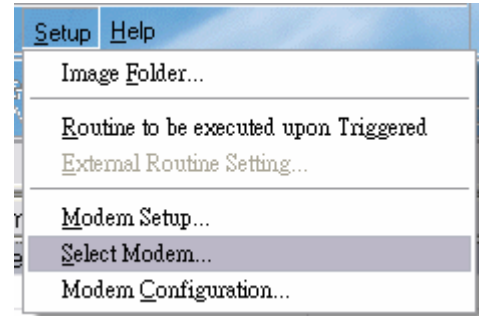
### Interval between Redial:

This is the duration which the modem will wait before launches next dial.

## CAMit I+gsm

### Select a Modem

If you have more than 2 modems installed on your computer, you will be able to decide which one is used to connect to the camera. To select the modem, please select from File menu **Setup** → **Select Modem**. When the page loads, simply select the modem you would like to perform the task and click **OK** when done.



### Hang Up:

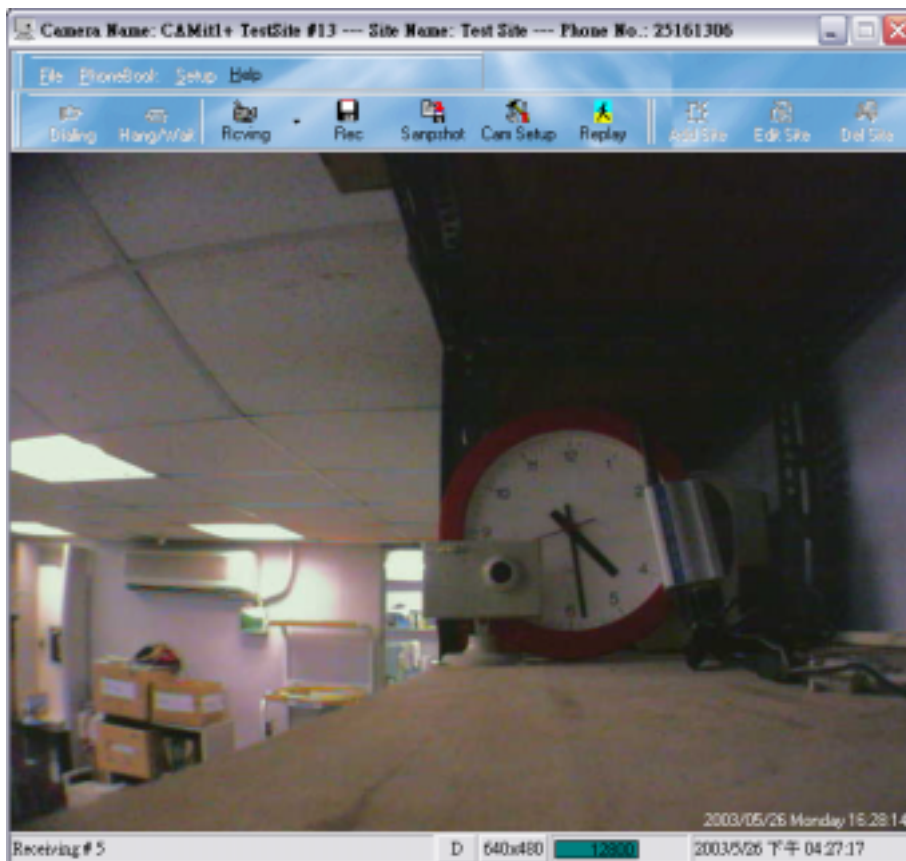
If you have made a call to wrong site, click on the **Hang Up** button at anytime to terminate the dialing.

## 5.2.3 Browsing Camera

This section will show you how to utilize the browsing window of your camera.

### 5.2.3.1 Browsing Window

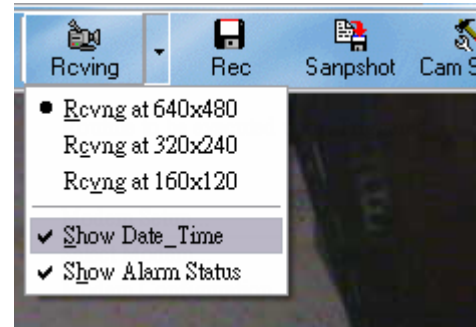
When you have established the connection between your camera and your computer, the images will start loading. The progress bar at the button will show you how your connections have been, and indicate when the image is about to complete.



## CAMit I+gsm

### 5.2.3.2 Image Information Display

The image displayed will have other information such as **Show Date\_Time** and **Show Alarm Status**. You will be able to choose whether to display these other information while browsing. To enable/disable them, please click on the **arrow** next to **receive** button, and check or uncheck the information you wish to or not to see.

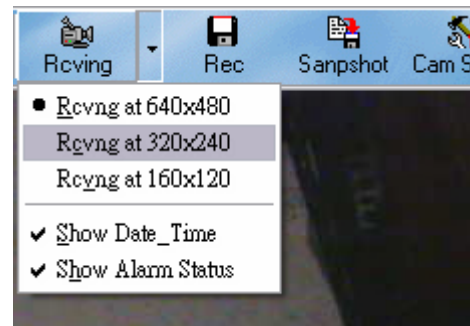


Note. Show Alarm Status will only be displayed when the camera call back from the remote site.

### 5.2.3.3 Changing Image Size

You will be able to change the capturing size for the camera to suit the network condition. You will be able to select the image size from **640x480**, **320x240** and **160x120**.

To change the image size, simply click the **arrow** next to **receive** and select the desire image size.

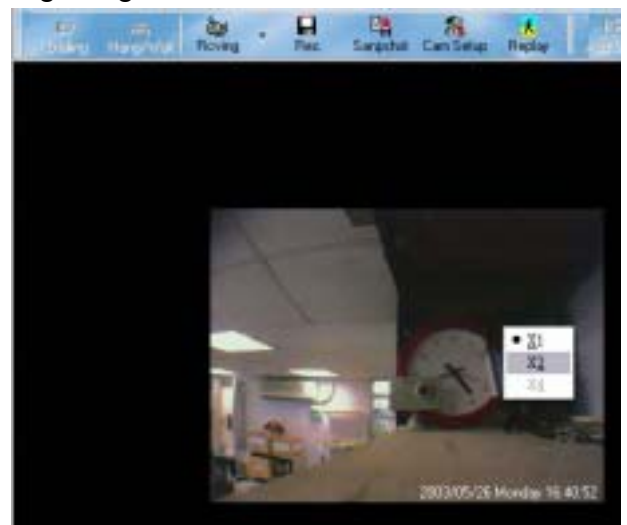


The new image size will be effective on the next coming image.

### 5.2.3.4 Change Screen Size

When you're browsing at smaller image size such as 320x240, or 160x120, you will be able to blown up the image by software. Simple right click on the browsing window and you will be able to blown up the receiving image size by ratio described.

Please note that the image would be blurry when you blown them up, due to the software generated images. If you wish to obtain a better image, we suggest you change the image size instead of blown up the image.



## CAMit I+gsm

### 5.2.4 Remotely Setup the Camera

When you establish the connection with your camera, you will be able to remotely setup your camera. Just like over direct connection, you will be able to set the parameters for your CAMit I+GSM.

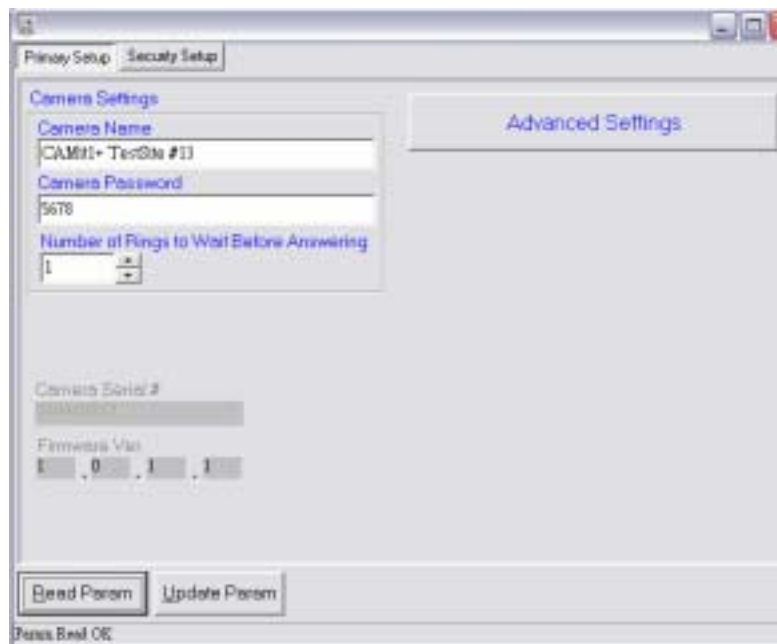
After your PC has connected onto the camera, the setup function will then be enabled. To initiate the setup page of you camera, simple click on the setup icon on the top of the window.



After your PC has connected onto the camera, the setup function will then be enabled. To initiate the setup page of you camera, simple click on the setup icon on the top of the window.

The setup is divided into 2 main sections; Primary and Security. Primary setup contains all the basic attributes for the camera where as Security has the parameter, enabling the camera to utilize its security functions.

#### 5.2.4.1 Primary Setup:



**Camera Name:** The Name of the camera site. This information will be useful when you record the images, as it will identify saved images.

**Camera Password:** You can enter the password here. If you have set the password, you will be required to enter them before you can browse the image. This is a security function to prevent invasion of privacy.

**Number of Rings before Answering:** Please enter the number of rings before your camera would respond to your calls.

## CAMit I+gsm

### Advanced Settings

To enable the Advance setting for your camera, please click on the **Advanced Setting** and the advance menu should appear.

#### Use GSM to Dial upon Triggered:

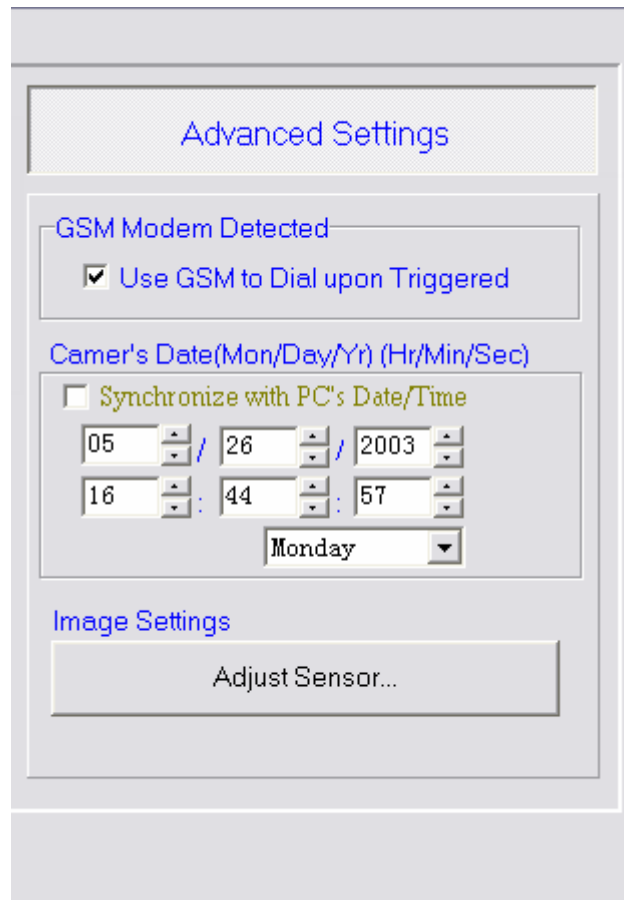
You will be able to enable the GSM modem function by check the box. Please note that the function will only be available when the camera detects the existence of the GSM modem.

#### Camera's Date:

You will be able to set the camera internal real time. Please insert the time you wish to set the camera to be, or you can check the **synchronize with PC's Date/Time** and the system will update the current computer time when you exit the setup.

#### Adjust Sensor:

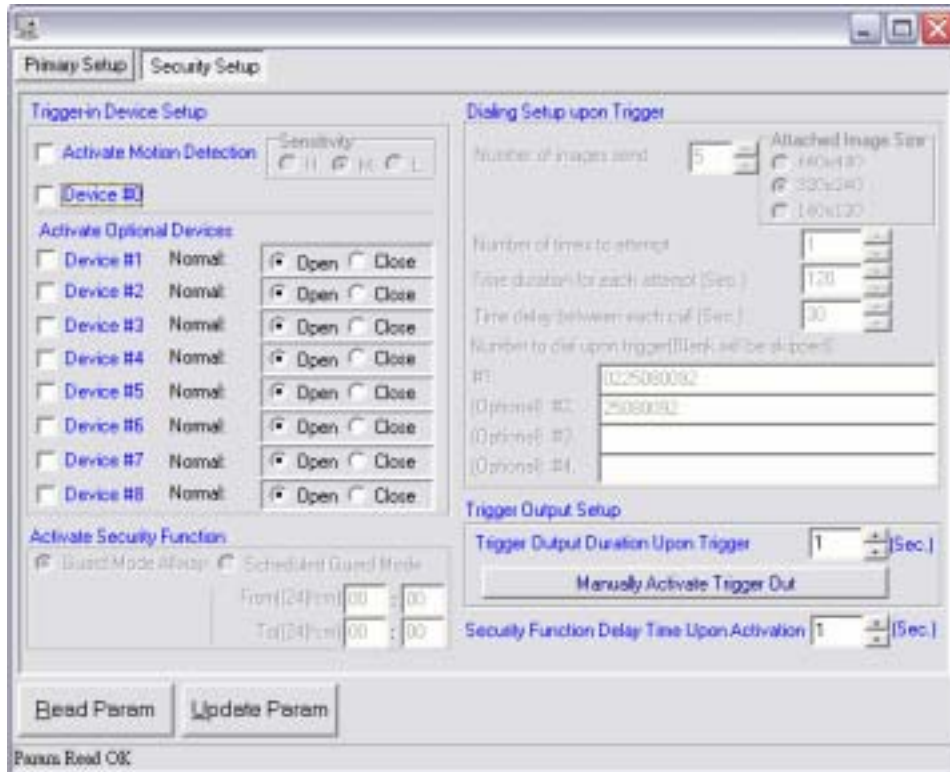
You will be able to adjust your image settings, such as contrast, brightness etc. Please move the scroll bar to optimize your image. The default is set to auto



## CAMit I+gsm

### 5.2.4.2 Security Setup

The security setup will allow you to setup the motion detection, trigger in and out devices.



#### Motion Detection

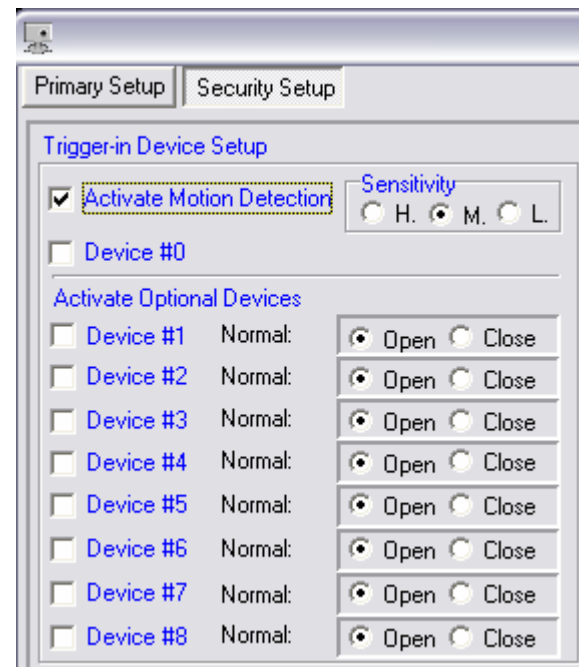
The Motion Detection function is a very valued function of the camera. It allows users to use the camera for security purposes, as the function will send image files to a pre-set computer upon motion detection. The files will also automatically be recorded to the hard drive of the computer for future reference.

To enable the motion detection, please check the box.

**Sensibility:** You will be able to choose 3 different sensibilities for your Motion Detection, simply choose High, Med, or Low according to your need.

#### Trigger In

Please check the box to enable Trigger In function. Please note that Device #0 is the default that is connected to the RJ22 power supply. Device #1 - #8 is the optional external device which you can purchase from your local dealers. To enable the optional device, please check the number according to the numbering.



## CAMit I+gsm

The Following Functions will only be available when Motion Detection or Trigger In is enabled.

### Activate Security Mode

You will be able to choose between 2 types of activating your security mode; **Always** and **Daily**.

#### Guard Mode Always:

If you chose this option, the camera will always be on security mode when you have enabled either Motion Detection or Trigger In.

#### Scheduled Guard Mode:

If Scheduled Guard Mode was chosen, the camera will only start its security mode including Motion Detection or Trigger In at the time given. The camera will rely on the internal real time clock for its time reference. To setup the activation time for security, please insert the time at the space provided.

### Image Captured

This is where you can set the images to be captured after the camera has been triggered and detects unusual intrusion. Please insert the number of image to be captured at the space provided.

#### Image Size

You will also be able to select different image size to be captured. Please select between 640x480, 320x240, 160x96.

### Call Back Functions

Your camera will do a call back for the number you've previously set to alarm you or your security system provider.

#### Call Back Tries:

Please insert number of tires for your camera to do the call back.

#### Call Back Duration:

Please enter the time duration you wish each call back to last before hang up and try again.

#### Call Back Time Delay:

Please insert the time delay between each of the call back. This delay will enable you to have time to connect to your camera if you have access to the computer.

#### Call Back Numbers:

You will be able to enter up to 4 sets of numbers for your camera to call back. If the first

## CAMit I+gsm

phone number did not get any replies, it will then continue on call the 2<sup>nd</sup> number.  
If the number is left blank, the camera will act as no numbers.

Note. Please be aware of the area code for the call back number. You might have to place the area code in order for the number to be valid. Please make sure that if you're dialing off state, the area code is added.

### Trigger Out Time

Trigger out time is the time duration which your camera would go and alert other external devices such as lights, or alarm. Please enter the number of second you wish the camera to trigger the devices.



### Manually Trigger Out

You will also be able to manually trigger out the device at your own will. Simply click on the button, and the device will be triggered until you stop it.

### Security Function Delay Time upon Activation

This time is used when you have enabled the security function such as Trigger In or Motion Detection. It is the delay starting time, for you to be able to exit the building before the security is activated.

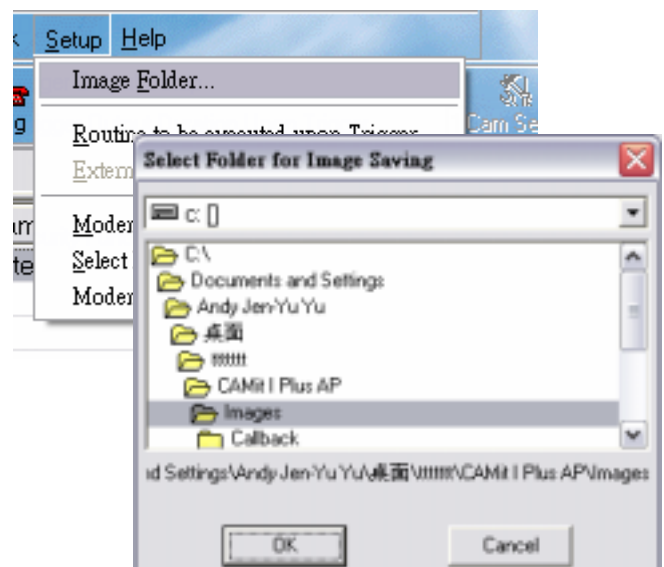


## 5.2.5 Recording Image

### 5.2.5.1 Setup Recording Directory

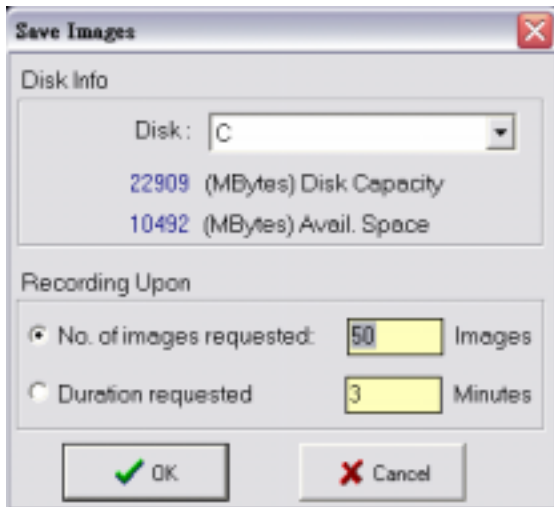
You will be able to set your own directory for the recorded images. The default recording directory is under the image folder of CAMit I. To change a recording folder, please select from File menu **Setup** → **Image Folder**.

A sub menu will show up, please select the new directory and click **OK** when done.



## CAMit I+gsm

### 5.2.5.2 Recording



You will be able to



record the images for future reference. To do so, while you're browsing, click on the **recording** button on top of the window.

A submenu will appear when selected. Simply enter the number of pictures you wish to record, or the time to be record. When you have entered the information, click **OK** and the program will start recording until the number of frames or time reached.

### Snap Shot

Other than recording chains of images, you will also be able to capture a single image. To do so, simply press the **Snap Shot** button, and the current image will be saved into JPEG format for future reference.



### 5.2.5.3 Call Back Recording

When you have set the camera to do call back when triggered, the system will be able to record these call back images for your reference in future.

Please have your computer turn on and the CAMit I+ AP running in order to the camera to communicate with your computer. Once the camera call back established the connection, the recording will begin. The number of picture recorded will be according to the number of frames you set at the camera setup.

### 5.2.6 Play Recorded Images

To play the recorded image, please use Image Player provided, or clicks on the **Play** button to load the play software.



The Image Player is a separate program which will automatically divide the recorded files into different categories. **Rec Manually, Rec upon Triggered, and Snapshot.**



## CAMit I+gsm

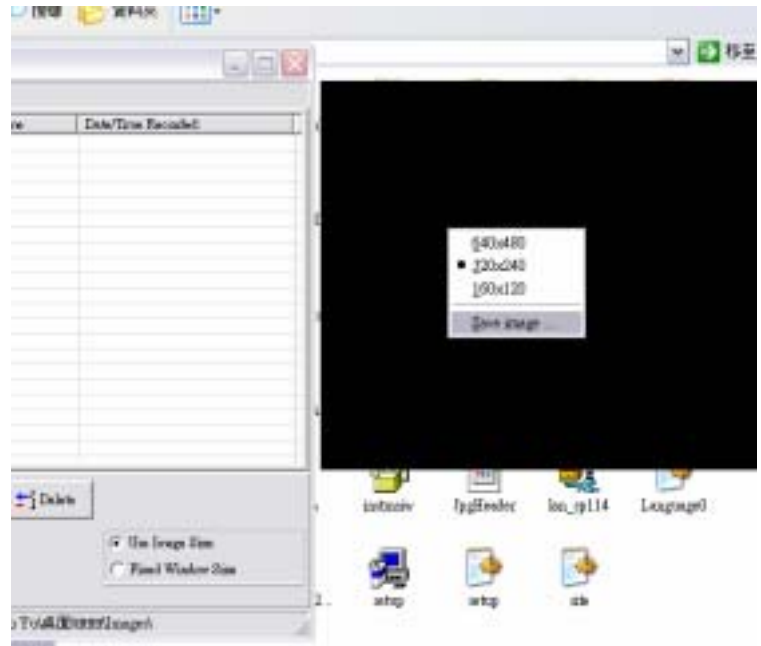
### 5.2.6.1 Delete Recorded Images

To delete a recorded image, simply select and highlight the images that you wish to delete, and press the **Delete** button. After your confirmation of deletion, the file will be removed immediately.



### 5.2.6.2 Save Images into JPG files

You will be able to extract individual frames from the images recorded into .JPG file so that the image maybe used as other reference. To do so, please pause on the frame you wish to extract, and right click your mouse on the image for menu to load. Select **Save image...** and choose the destination folder to place the file.



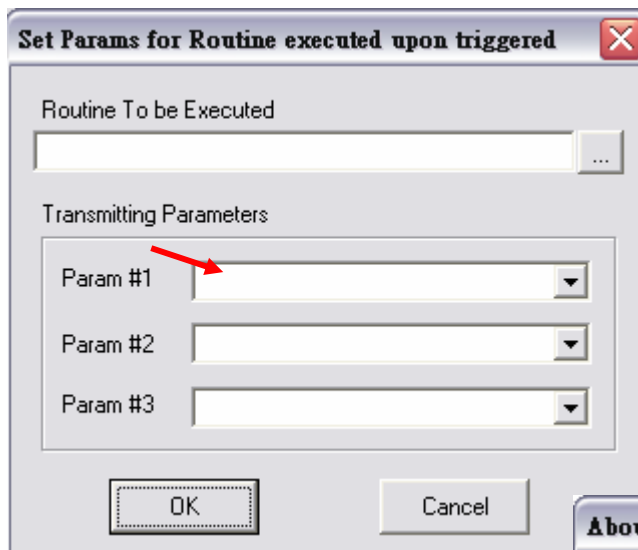
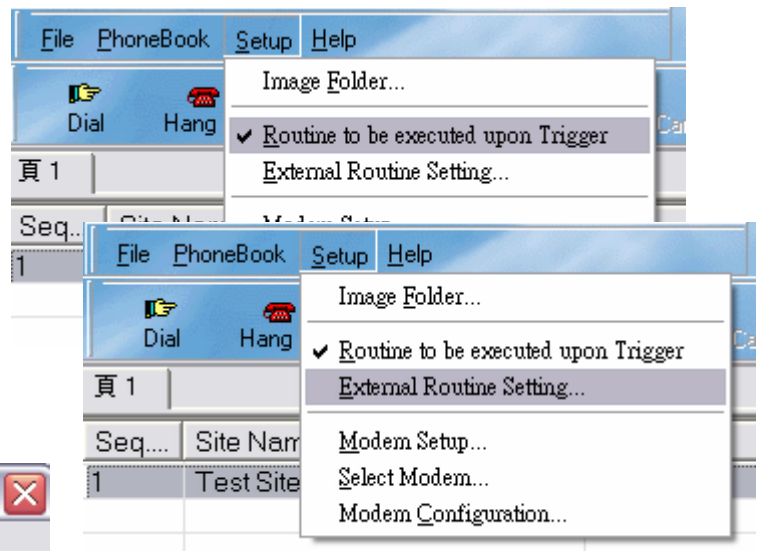
## CAMit I+gsm

### 5.2.7 Modem Configurations

You will be able to configure your modem via the software. To enter the modem configuration page please select from File menu **Setup** → **Modem Configuration**. Due to each individual brand of modem are different. Please refer to your modem instruction manual for detailed configuration.

### 5.2.8 External Routine

When the camera is triggered and call back to alert the computer, you will be able to set other software to execute when call back is detected. This can be used to integrate the camera together with your system. To enable external routine, please check **Routine to be executed upon Trigger** from Setup.

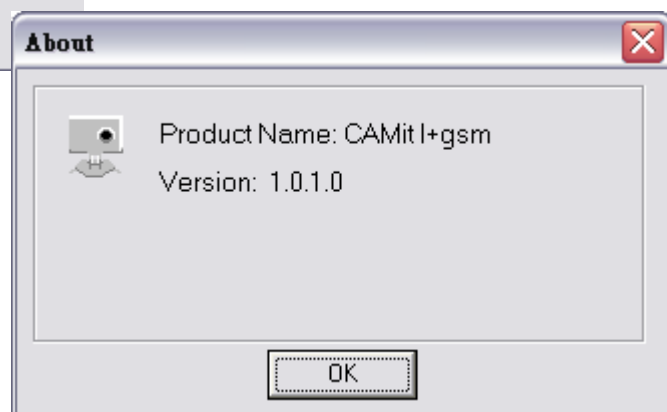


When checked, please select **External Routine Setting**. The menu should load once selected.

Please select the .exe file to be executed when detected a call back. You can choose up to 3 parameters to be send to the execution program.

### 5.2.9 Help

Under the **About** of Help menu, you will be able to know what version of the software you're using currently. You can always download the newer version from our web-site at <http://www.3jtech.com.tw>.



## **6. Frequently Asked Questions:**

### **Can I view the same site from different locations?**

Yes, as long as you have the CAMit I+ AP software installed on that particular computer for which you wish to view from.

### **Can I view same site simultaneously from 2 locations?**

No, due to regular phone line only supports point to point, only one user is allowed to establish connection with camera at one time.

### **Why won't my modem in the camera recognize the dial tone?**

Different countries use different dial tones and frequencies. You will need to connect the camera to a PC with the DB9 connector cable for setup to set the country code using the CAMit I+ Setup program. After you are done setting the country code, you need to power off then on the camera for settings to be active.

### **Why won't my external trigger input work?**

Once the camera is triggered externally, the camera will only reset after the trigger stage is restored. This means that the camera will only trigger once upon each activation. For example the contact sensor has to return to close stage and then re-open in order for it to be triggered again.

### **What should I do if I forget my password?**

Please connect your camera with a computer using the serial cable included in the package and run the Setup program to change the password settings.

## CAMit I+gsm

# 7. Specifications

- Power consumption: 5V DC, 300mA
- Interfaces:
  - DB9C at auto-detect baud rate, 8, n, 1 for parameters setup
  - RJ11 for phone line
  - RJ22 connector for 5V DC/90~240V AC adaptor and trigger in/out
- Trigger in: Normal close to open or Low to High TTL level
- Motion detection sensitivity: High, Medium, and Low
  - Trigger out: Low to High TTL Level
  - Transmission Speed:
    - High Resolution (640x480): maximum 1.6 frames/second
    - Medium Resolution (320x240): maximum 3 frames/second
    - Low Resolution (160x120): maximum 5 frames/second
- Camera Specification:
  - CMOS Camera support Specification:
    - 101,376 pixels, 1/4" lens, CIF format
    - 352(H) x 288(V)
  - CAMit I use Specification:
    - 300K pixels, 1/3 lens @ at 120 degree angle, others are optional.
    - 352(H) x 288(V)
  - S/N Ratio: > 48dB
  - Gamma Correction: 0.45
  - Lens (optional lens available upon request)

	Standard lens:
Min. Illumination:	<5 lux@f2.0
Focal Length	3.6mm
Back Focal Length	5.96mm
Aperture F	2
Angle of View (DIA)	118
- Operation Environment:
  - Temperature: 0 °C ~ 55 °C
  - Humidity: 85% relative at 25 °C
- Weight: 150g
- Dimension of Main Body: 10cm x 6.5cm x 5 cm