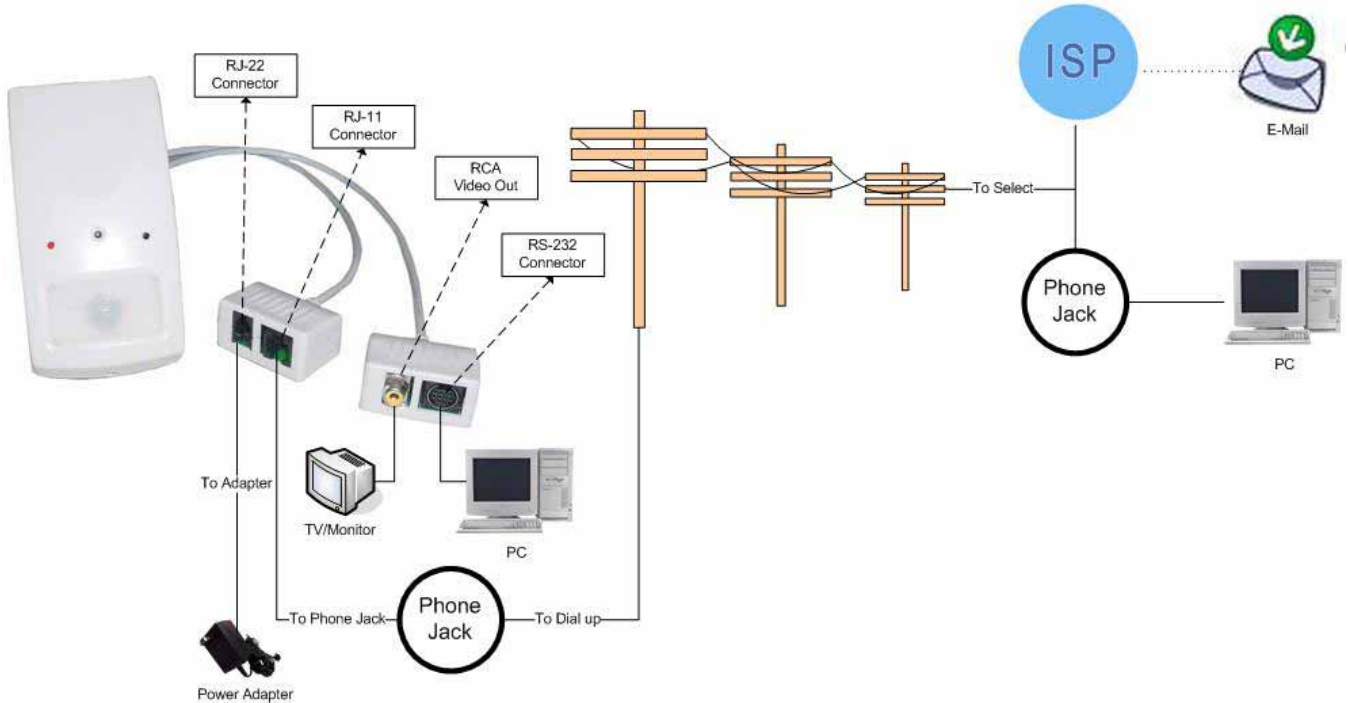


Quick Installation Guide for pCAMit I

■ Connecting the pCAMit I Modem Camera

- 1) Connect the RJ11 telephone cable to pCAMit I modem camera.
- 2) Connect the power cable to RJ22 jack of pCAMit I.



NOTE:

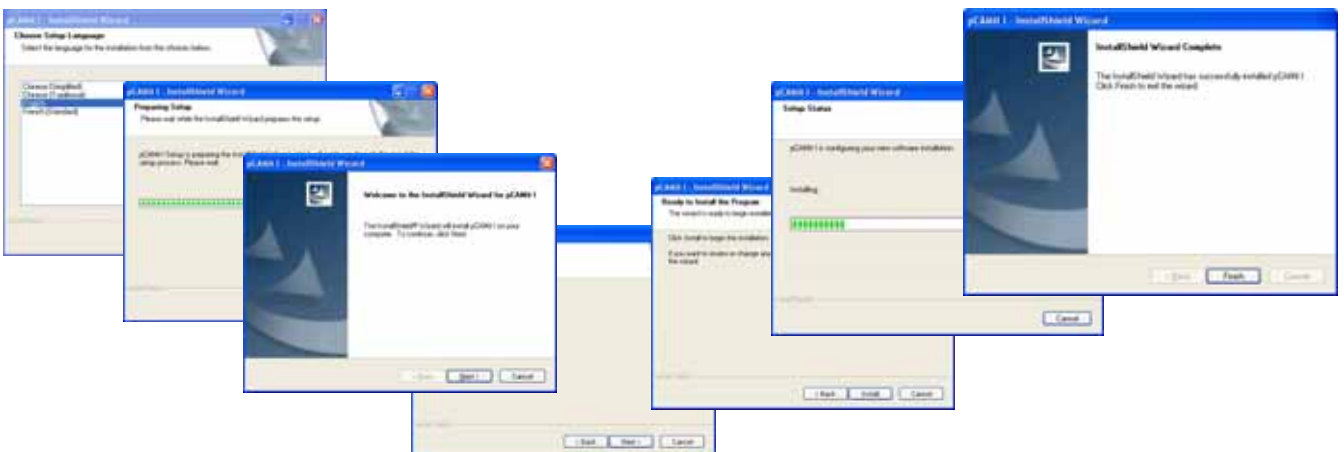
RS-232 connector is used for the camera settings via “pCAMit I Setup” contained in the pCAMit I software. Please refer to the user’s manual we offer for more details about the setup of the camera.

■ Install the pCAMit I Software

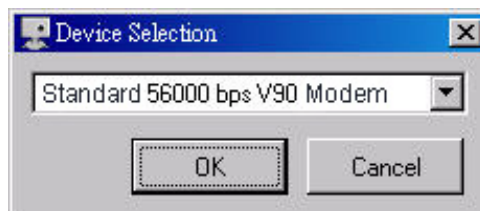
- 1) Insert the CD and install pCAMit I software to your PC or download the AP from: <http://www.3jtech.com/downloads.htm> for pCAMit I modem camera.

For CD installation, please click on “Install pCAMit I AP” and follow the wizard.

For Internet downloaded software, please unzip the files, and execute file **Setup.exe** and follow the wizard.



- 2) Run the “**pCAMit I AP**” software by selecting **Start / All Programs / pCAMit I**.
- 3) Pull down the device selection list and choose the modem that had been set up for pCAMit I on PC or laptop.

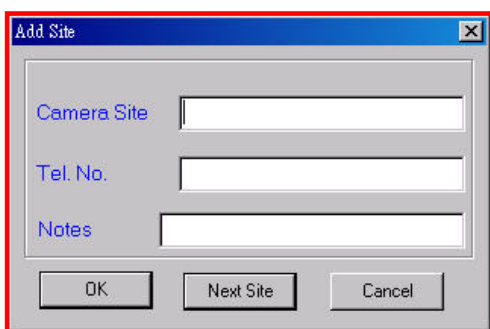
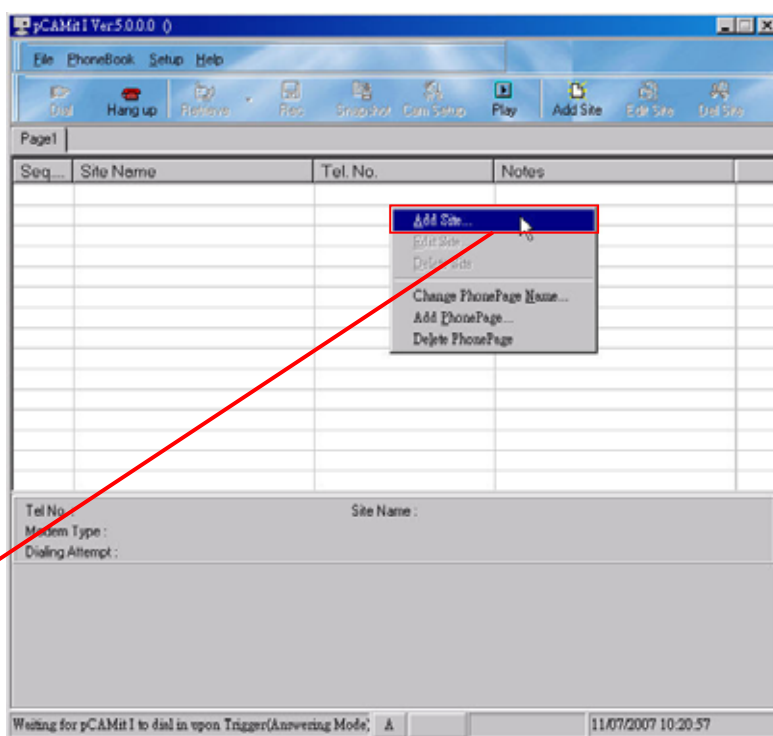
**NOTE:**

The modem connected to PC should be set up in advance of using the pCAMit I AP. For more details on modem settings, please refer to the user's guide of the modem you have purchased.

- 4) Click **OK** button.

▪ View the Camera in Real Time

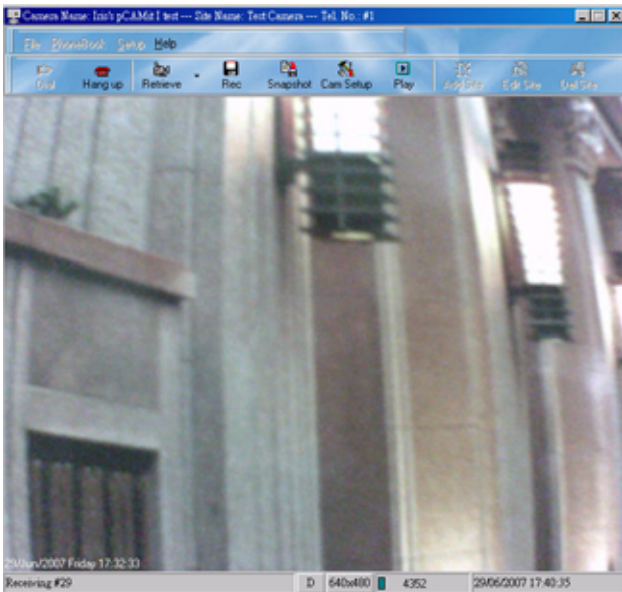
- 1) Right click on the dial-up list and select the function of “**Add Site**” to add the dial-up information.
- 2) Input the name of the camera site and the telephone number belonging to the telephone line connected to the pCAMit I modem camera.

**NOTE:**

Users are able to enter their choice of names for each camera site.

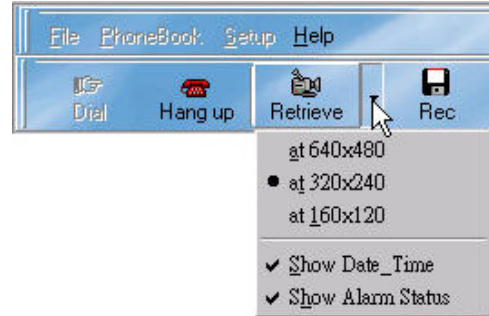
- 3) Click **OK** button.

4) Select one camera site which you wish to dial, and click on the **Dial** icon or double click on the camera site directly.



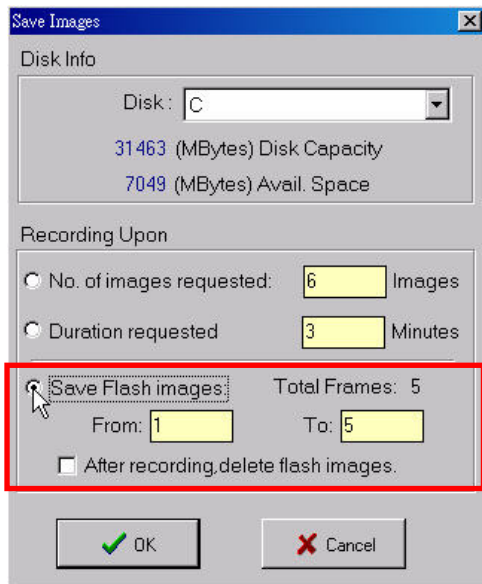
5) If modem dialing is successful, the browser screen will appear.

6) Users can change to different resolutions by clicking the **“Retrieve”** icon. Default resolution for the image is 320*240.



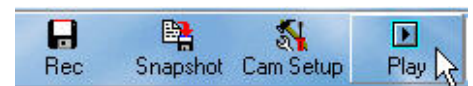
7) During the connection, the user can also click **“Rec”** or **“Snapshot”** icon to perform the real-time recording function or take a snapshot of the camera image.

▪ **Download the Triggered Images and View Images from the Camera**



1) Click the **“Rec”** icon and select the **“Save Flash images”** function, then, press **OK** to download the triggered images stored in the flash memory of pCAMit I to your local PC.

2) Click the **“Play”** icon, all image files are classified into 3 kinds: **“Rec upon Triggered”**, **“Rec Manually”** and **“Snapshot”**.



Please choose the page in which your desired image types are located.

3) Click the selected file, and then the image window will pop up immediately.

